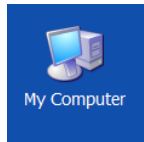


How Do I Run a Scan Disk on My Computer?

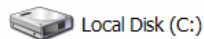
Janet Benincosa, TI Specialist

Double-click on **My Computer**.

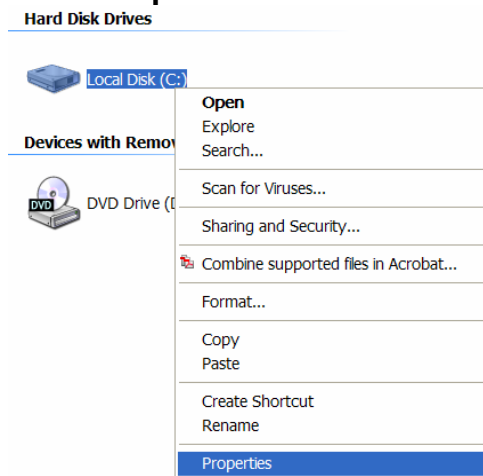


Right-click on **Drive C**.

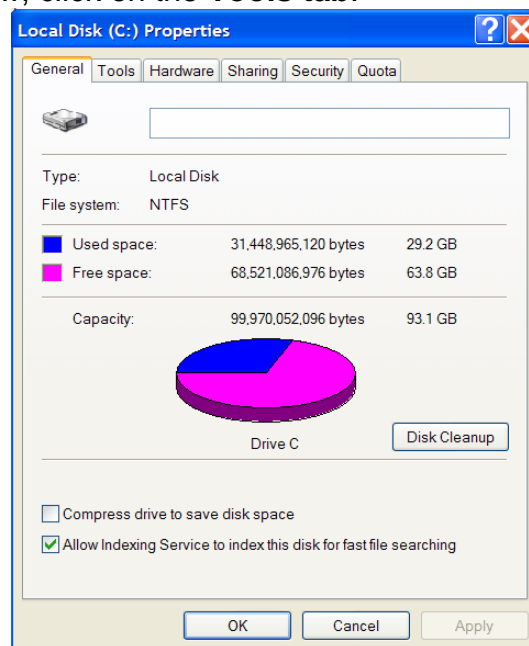
Hard Disk Drives



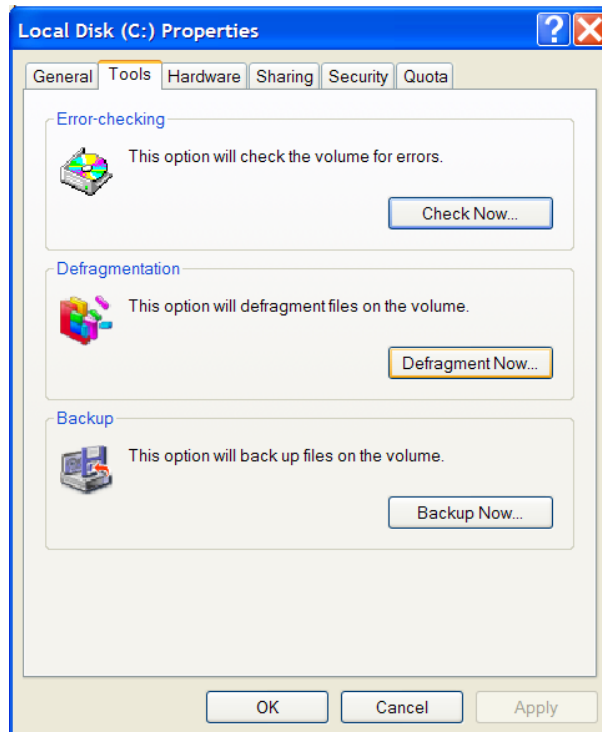
From the pop-up list, click on **Properties**.



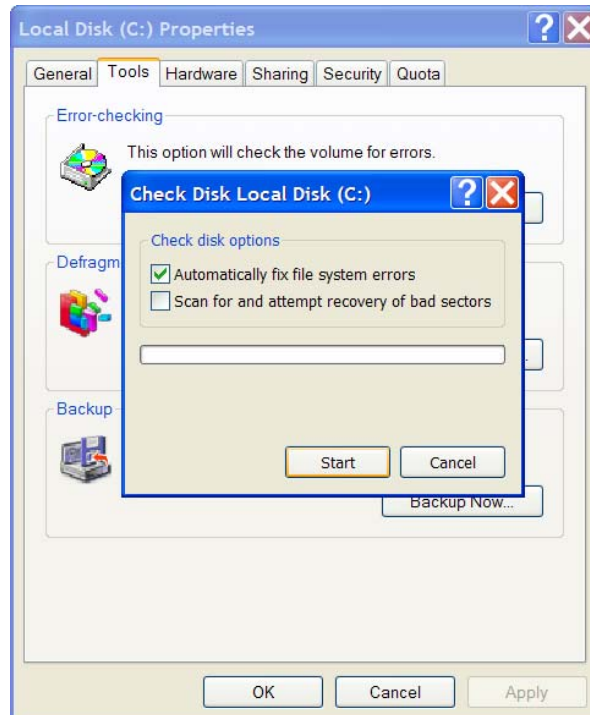
On the pop-up window, click on the **Tools** tab.



Click on the **Check Now** button.



On the message box, click to select **Automatically fix file system errors**. The, click the **Start** button.



A message will display when the Scan is complete. Click OK.

Janet Benincosa, TI Specialist