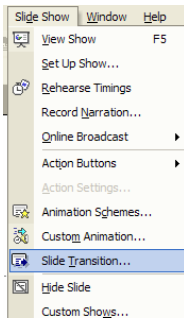
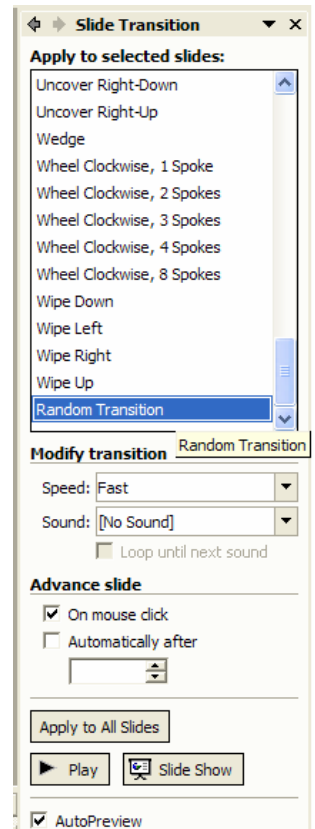


Slide Transitions

You can create special effects as the presentation moves from one slide to the next. Transition can create a more professional appearance to your slide show. Click on **Slide Show** on the Main Menu and click on **Slide Transition**.



The Slide Transition task pane appears on the right. You may select a specific transition for all slides by clicking on it, or you may select Random Transition, letting the program assign random, varied transitions to each slide.



Advancing Options

If you want to control when the slides advance, make sure to check the option "on mouse click."

Otherwise, the slides can be preset to advance at timed intervals by clicking the option "Automatically after" and typing in the number of seconds.

When you have made your selections, be sure to click on **Apply to All Slides**.