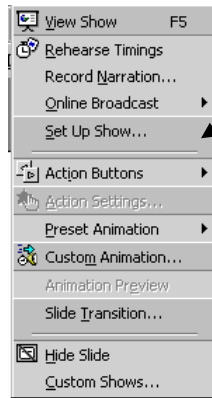
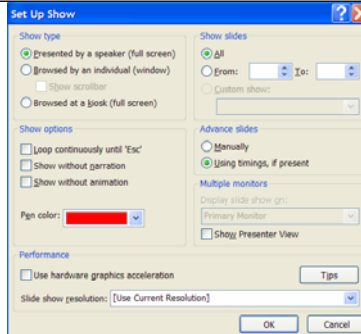
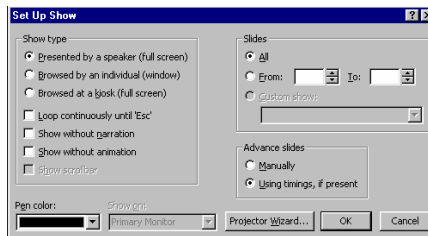


# To use the Slide Show menu

1. On the **Slide Show** menu, click **Set Up Show**.



2. On the dialogue box that appears, click **All**.



3. On the section at the bottom-right of the box, you can select how slides are advanced. If you are presenting information as a speaker and want to control manually when the slides advance, click **Manually**. (OR, if you want to set up as a self-running presentation, check **Browsed at a kiosk** and **Loop continuously**.)
4. On the **Slide Show** menu, click **View Show**.
5. To end the show, press the **ESC** key.